

CONSTITUCIÓN 1778 (SAN FERNANDO)

● PLANTA 2° - 3° PISO
ESC 1:150

DEPTO A

SUP. CUB: 44.21 M²
SEMICUB: 5.85 M²
SUP. TOTAL: 47.13 M²

DEPTO B

SUP. CUB: 69.74 M²
SEMICUB: 8.17 M²
SUP. TOTAL: 73.82 M²

DEPTO C

SUP. CUB: 42.26 M²
SEMICUB: 6.18 M²
SUP. TOTAL: 45.34 M²

DEPTO D

SUP. CUB: 43.63 M²
SEMICUB: 6.52 M²
SUP. TOTAL: 46.89 M²

DEPTO E

SUP. CUB: 43.63 M²
SEMICUB: 6.52 M²
SUP. TOTAL: 46.89 M²

DEPTO F

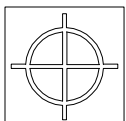
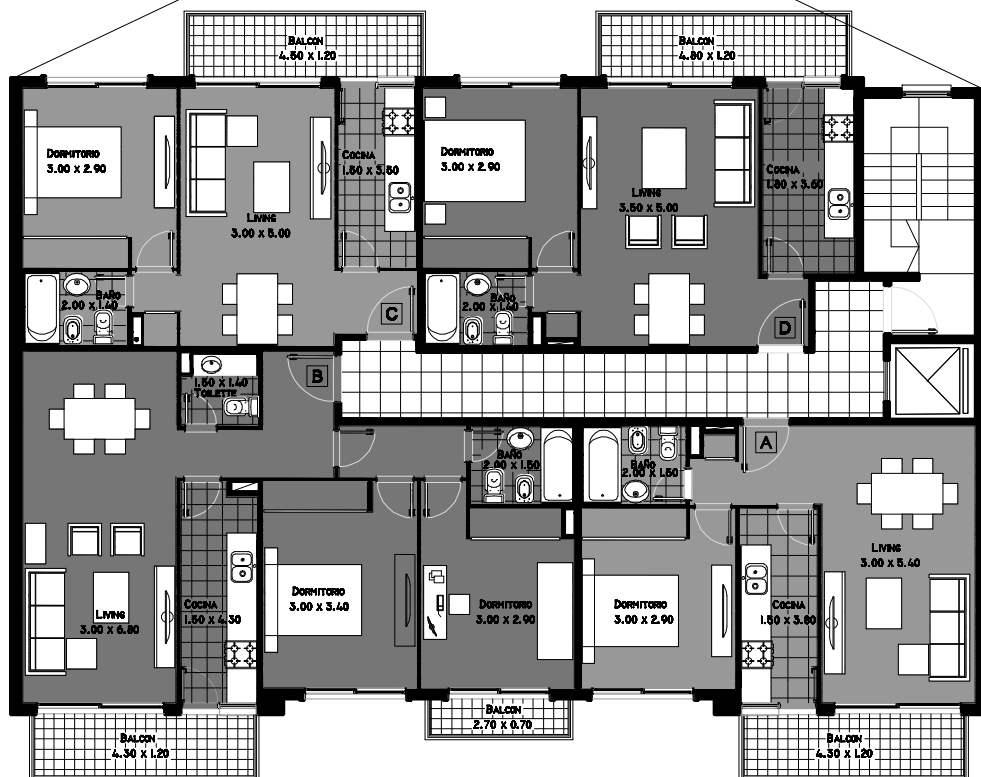
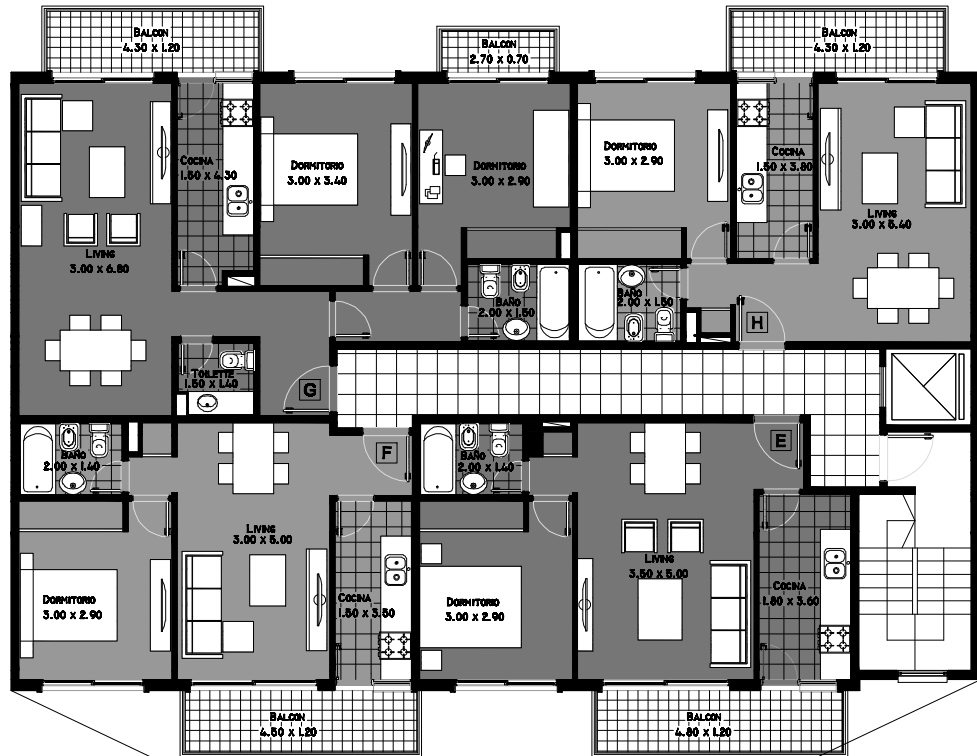
SUP. CUB: 42.26 M²
SEMICUB: 6.16 M²
SUP. TOTAL: 45.34 M²

DEPTO G

SUP. CUB: 67.40 M²
SEMICUB: 8.17 M²
SUP. TOTAL: 71.48 M²

DEPTO H

SUP. CUB: 42.00 M²
SEMICUB: 5.85 M²
SUP. TOTAL: 44.92 M²



ESTUDIO F .F. AUGERI